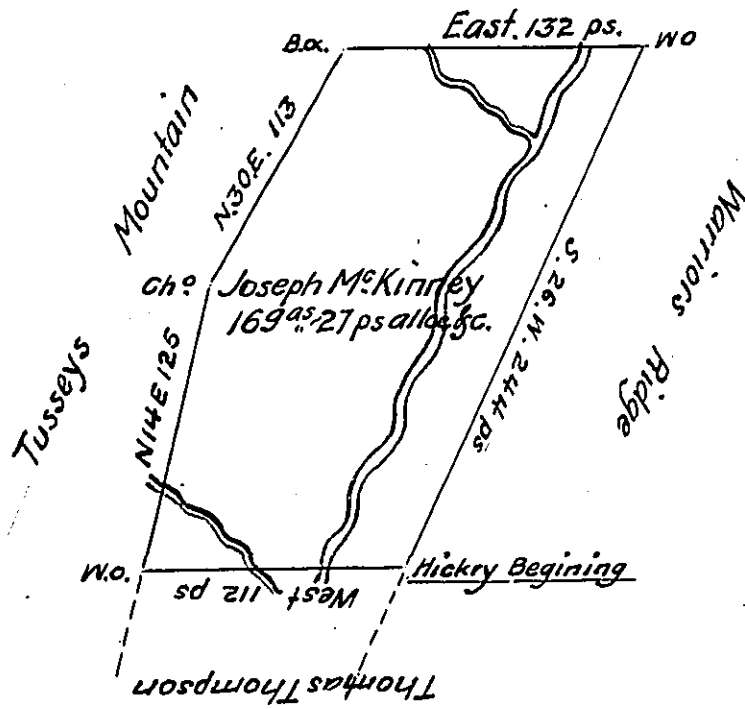


Robert Wrights Improvement



Situated on the Waters of Town Creek Late Cumberland now Bedford County  
 Containing 169<sup>as</sup> 27 perches Allce &c. Surveyed the 20<sup>th</sup> Day of March 1767. by Richard Tea  
 then Deputy Surveyor for Joseph M<sup>c</sup> Kinney Junior. On order of Survey N<sup>o</sup> 2895. Dated  
 the 24<sup>th</sup> Day of February 1767. Examined and the lines Retraced on the Ground the 11<sup>th</sup>  
 Day of May 1802

per William Piper D. Surveyor

To Samuel Cochran Esquire S.G.

IN TESTIMONY that the above is a copy of the original remaining on file in  
 the Department of Internal Affairs of Pennsylvania, made  
 conformably to an Act of Assembly approved the 16th day of  
 February, 1833, I have hereunto set my Hand and caused  
 the Seal of said Department to be affixed at Harrisburg,  
 this twenty-third day of June 1908

*Henry Houser*

Secretary of Internal Affairs.